

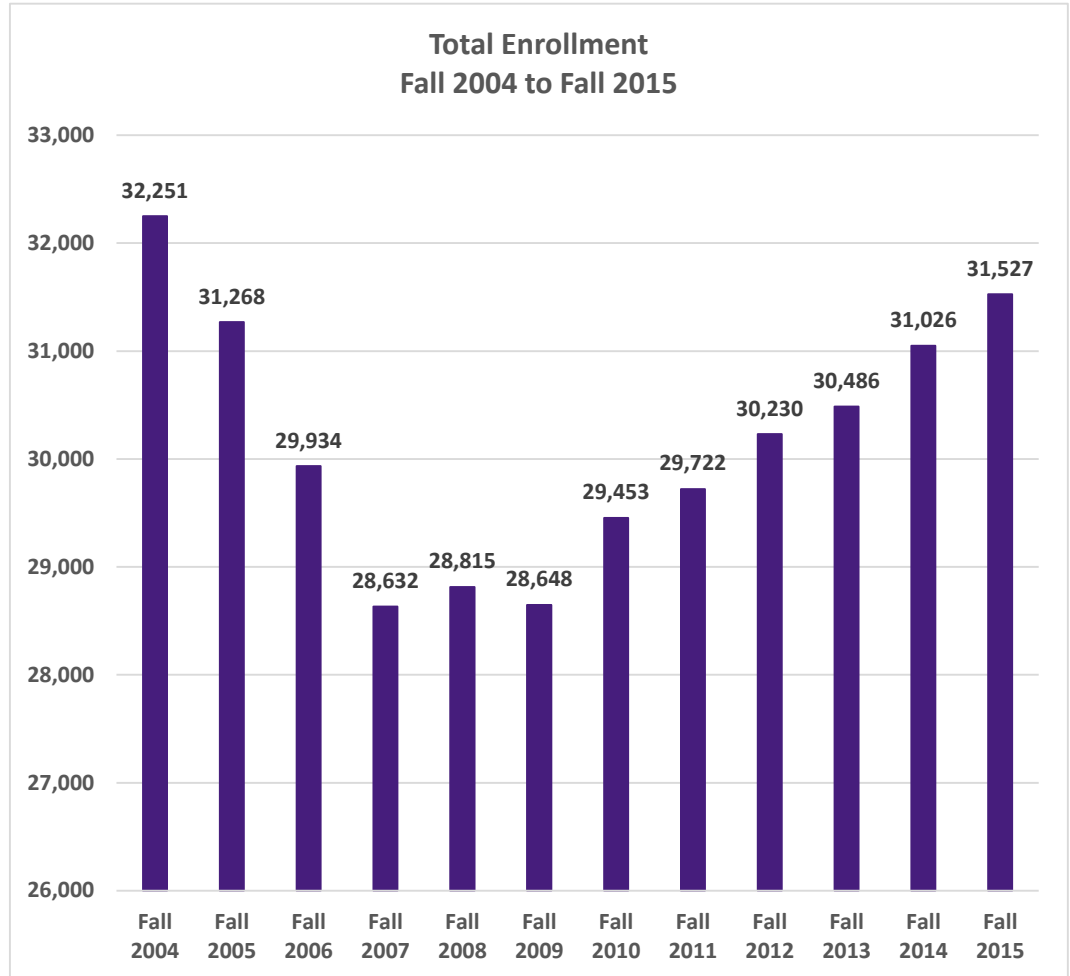
In this Issue:

Fall 2015 Enrollment Profile

Enrollment by Major

New Freshmen
Retention and ACT
Scores

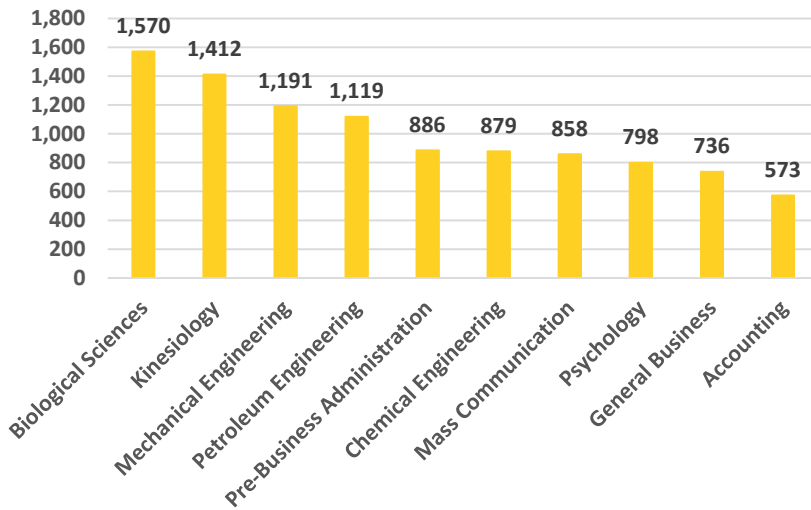
Fall 2015 Enrollment Profile



Enrollment Summary

With 31,527 total students in Fall 2015, Louisiana State University has its largest enrollment since 2004 (32,251). 26,159 students are undergraduates (83%), 4,409 are graduate students (14%), and 959 are professional students (.03%). There are 15,097 male students (48%) and 16,430 female students (52%) in Fall 2015. LSU has 24,021 students from the state of Louisiana (76%), 5,802 students from other states and U.S. possessions (18%), and 1,704 students from other countries (1%). 27,838 students are full-time (88%) and 3,689 are part-time (12%). Fall enrollment includes 31,076 on campus students (99%), and 451 students are enrolled in the LSU Online program (1%).

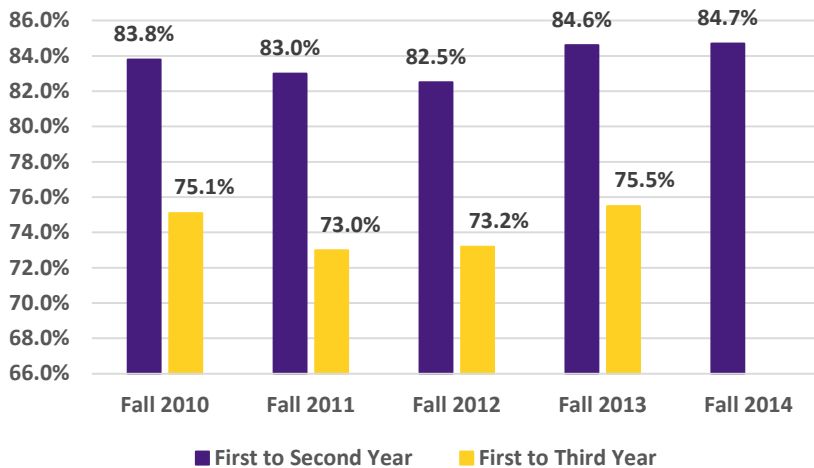
Top Ten Undergraduate Majors by Enrollment Fall 2015



Most Popular Majors

The STEM field majors are well-represented at LSU. Biological Sciences (1,570 students) remains the most popular major. Kinesiology is second with 1,412 students. Rounding out the top five are Mechanical Engineering (1,191), Petroleum Engineering (1,119), and Pre-Business Administration (886). The remainder of the top ten majors includes: Chemical Engineering with 879 students, Mass Communication with 858, Psychology with 798, General Business with 736, and Accounting with 573.

First to Second Year and First to Third Year Retention Rates of New Freshmen Fall 2010 to Fall 2014



Retention Rates

LSU's overall first to second year new freshmen retention rate has increased for the second year in a row. The first to second year retention rate for Fall 2014 entering freshmen is 84.7%, the highest since the class of 2007 (85.4%). Additionally, the overall first to third year retention rates of LSU students also increased. The Fall 2013 class has a 75.5% first to third year retention rate. This also represents the highest retention rate since the class of 2007 (76.5%).

Did You Know?

The average ACT composite score of new freshmen remained constant at 25.6 for Fall 2015. In addition, the average high school GPAs of new freshmen, 3.50 overall and 3.43 academic (based on 19 required core units), have also remained constant for the past two years.

For more information about Fall 2015 Enrollment, please visit the Office of Budget & Planning website: <http://www.lsu.edu/bgtplan/studentdatareport/14-day-enrollment/enrollment.php>.

Average ACT Composite Scores of New Freshmen Fall 2011 to Fall 2015

