

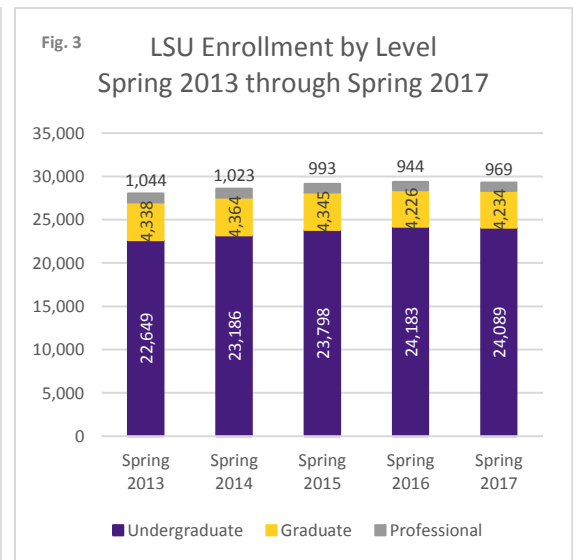
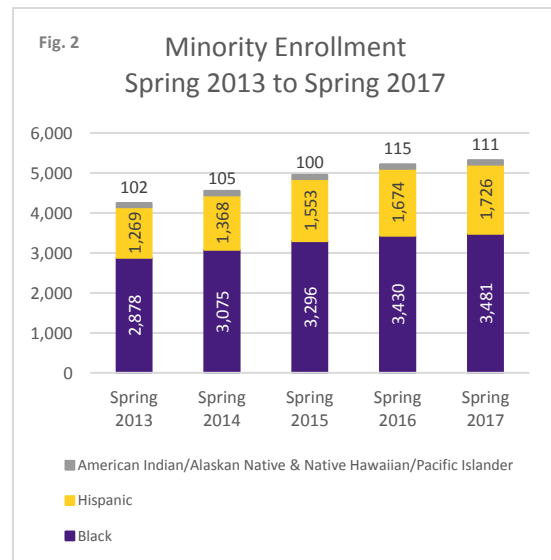
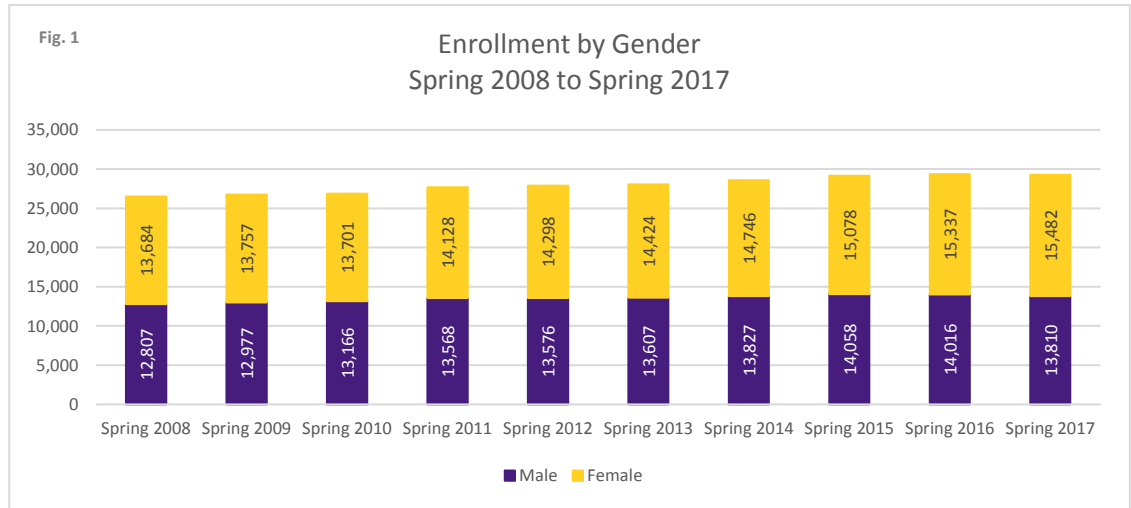
**In this Issue:**

Spring Enrollment Comparisons

Minority Enrollment

Enrollment by College and Popular Major

## Spring 2017 Enrollment



## Enrollment Breakdown

With 29,292 total students enrolled in Spring 2017, Louisiana State University has its eighth-largest Spring class ever. The highest in LSU history was 29,974 in Spring 2005. As seen in Figure 1, 13,810 (47%) of the students are male and 15,482 (53%) are female, an 8% and 13% increase respectively in the ten-year period since Spring 2008. LSU's Spring 2017 minority enrollment (Figure 2) has increased 25% since Spring 2013, and now includes 3,481 Black students (a 1% increase from Spring 2016 and a 21% increase from Spring 2013), 1,726 Hispanic students (a 3% increase from Spring 2016 and a 36% increase from Spring 2013), and 111 American Indian/Alaskan Native & Native Hawaiian/Pacific Islander students (a 4% decrease from Spring 2016 and a 9% increase from Spring 2013). Enrollment by level (Figure 3) shows that LSU has 24,089 Undergraduates (a 0.4% decrease from Spring 2016 and 6% increase from Spring 2013), 4,234 Graduates (a 0.2% increase from Spring 2016 and a 2% decrease from Spring 2013), and 969 Professionals (a 3% increase from Spring 2016 and an 8% decrease from Spring 2013).

## LSU Enrollment by Year Classification, College, & Majors

Figure 4 compares Spring 2016 and Spring 2017 enrollment by year classification. Three classifications increased from Spring 2016 to Spring 2017: Freshmen (5% increase), Masters (1% increase), and Professionals (3% increase). In Figure 5, four colleges experienced undergraduate enrollment growth from Spring 2016 to Spring 2017: Coast & Environment (5% increase), Engineering (0.2% increase), Mass Communication (1% increase), and UC Center for Freshmen Year (7% increase). Figure 6 provides the ten undergraduate majors with the highest Spring 2017 enrollment. Kinesiology, Biological Sciences, and Mechanical Engineering take the top three spots.

Fig. 4 Enrollment by Year Classification Spring 2016 & Spring 2017

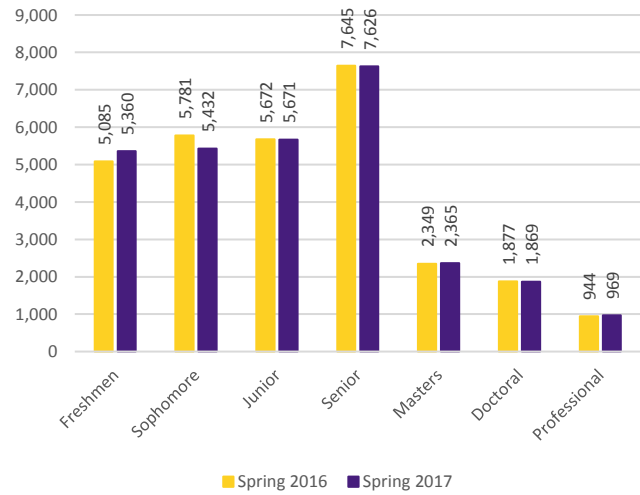


Fig. 5 Undergraduate Enrollment by College Spring 2016 & Spring 2017

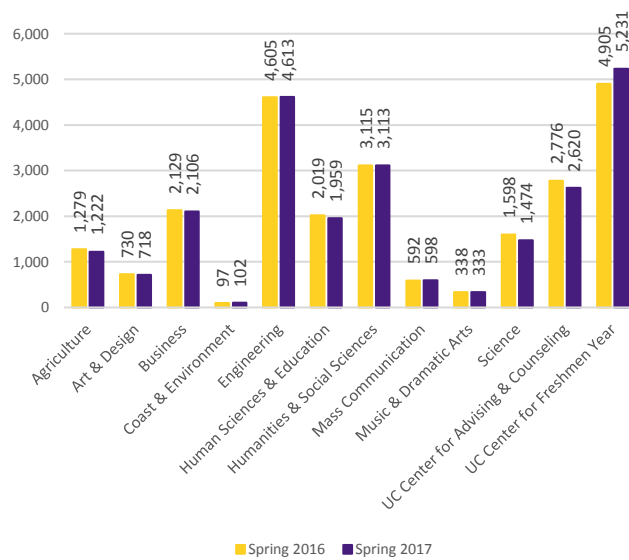
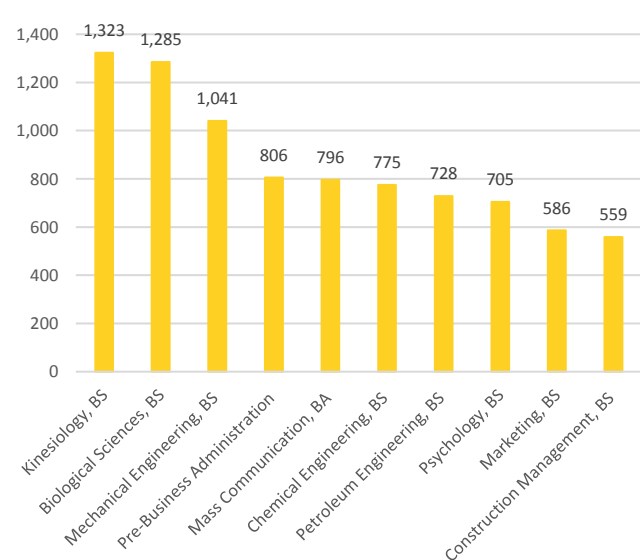


Fig. 6 Top Ten Undergraduate Majors Spring 2017



## Did You Know?

Fig. 7

LSU Online has expanded its First Spring Module enrollment count by 278% in the four years since its inception (Figure 7). The First Spring 2017 Module has a total of 662 students enrolled, the highest number of students in any of the online modules in the history of the program and a 32% enrollment increase from the 2016 First Spring Module. LSU Online has recently added several new programs to its lineup, implementing Kinesiology and Social Work Masters programs as well as Graduate Certificate programs in Analytics and Workforce Development.

For more information about LSU Online enrollment, please visit the Office of Budget & Planning website: <http://www.lsu.edu/bgtplan/studentdatareport/14-day-enrollment/enrollment.php>.

LSU Online First Spring Module Enrollment 2014 to 2017

