

LSU
Deposit and Collateral Report
For the Quarter Ended June 30, 2015

Deposits Requiring Posting of Collateral:	Demand Deposit Sweep/MMA Repurchase	Certificates of Deposit	Total Deposits in Financial Institutions	Collateral (1)
LSU A & M and LSU Health New Orleans				
Chase - LSU, Health Plan Premium	\$ 39,594,902		\$ 39,594,902	\$ 69,099,939
Chase-HSCNO	25,016,746	\$ 18,600	25,035,346	22,308,563
Capital One - LSU-A	2,828,749		2,828,749	2,545,420
St. Landry Bank - LSU-E	296,632		296,632	500,041
Total	\$ 67,737,029	\$ 18,600	\$ 67,755,629	\$ 94,453,963
LSU Health Shreveport				
US Bank	\$ 4,265		\$ 4,265	\$ 250,000
Regions Bank-EA Conway	950,118		950,118	964,121
Regions Bank-Huey P Long	1,293,443		1,293,443	1,314,313
Regions Bank-Shreveport	43,477,145		43,477,145	47,338,972
Regions Bank-Shreveport Endowment Fds	2,938,515		2,938,515	-
Total	\$ 48,663,486	\$ -	\$ 48,663,486	\$ 49,867,406
LSU HCSD				
JP Morgan Chase (HCSD) & Capital One (WSTMC)	\$ 44,347,665		\$ 44,347,665	\$ 47,420,330
J. P. Morgan Chase (MCLNO Trust Fund)	5,141,466		5,141,466	\$ 5,374,492
Capital One (MCLNO Trust Fund)	2,121,508		2,121,508	2,481,631
Total	\$ 51,610,639		\$ 51,610,639	\$ 55,276,453
LSU - Shreveport				
Campus Federal Credit Union		\$ 100,200	\$ 100,200	\$ 250,000
Capital One (Hibernia National Bank)	3,115,129		3,115,129	11,143,149
Total	\$ 3,115,129	\$ 100,200	\$ 3,215,329	\$ 11,393,149
Total Requiring Collateral	\$ 171,126,283	\$ 118,800	\$ 171,245,083	\$ 210,990,971
Deposits In Trust or Federal Obligations Not Requiring Collateral				
Raymond James Deposit In Trust	2,180,322		\$ 2,180,322	
Federated Money Markets	\$ 120,710,666		\$ 120,710,666	
Federated Funds-Treas. Oblig. (2)	40,338		40,338	
Total	\$ 122,931,326	\$ -	\$ 122,931,326	
Total Deposits	\$ 294,057,609	\$ 118,800	\$ 294,176,409	

(1) Collateral amounts include FDIC coverage of \$250,000 on Demand Deposits, \$250,000 on CD's and \$250,000 by the National Credit Union Share Insurance Fund on deposits with Campus Federal Credit Union.

(2) One Group & Federated Funds are no-load, open ended mutual funds investing in U.S. Treasury obligations.

LSU
Investment Summary
For the Quarter Ended June 30, 2015

Fund Description	As of 7/1/2014			As of 9/30/2014			As of 12/31/2014			As of 3/31/2015		As of 06/30/2015	
	Value	Cost	Market Value	Cost	Market Value	Cost	Market Value	Cost	Market Value	Cost	Market Value		
LSU Health Shreveport													
Current Funds													
Cash/Sweeps S.	\$76,506,844	\$69,267,534	\$69,267,534	\$66,239,575	\$66,239,575	\$50,407,737	\$50,407,737	\$43,481,410	\$43,481,410				
Cash/Sweeps C.	\$2,698,625	\$4,884,656	\$4,884,656	\$2,703,079	\$2,703,079	\$897,390	\$897,390	\$950,118	\$950,118				
Cash/Sweeps H.	\$7,537,281	\$5,714,259	\$5,714,259	\$3,382,338	\$3,382,338	\$2,176,228	\$2,176,228	\$1,293,443	\$1,293,443				
Money Market Accounts/Repos S.								\$2,180,322	\$2,180,322				
Cash/Sweeps	\$86,742,750	\$79,866,449	\$79,866,449	\$72,324,992	\$72,324,992	\$53,481,355	\$53,481,355	\$45,724,971	\$45,724,971				
Money Market Accounts/Repos (A)	\$0	\$0	\$0	\$0	\$0	\$0	\$0	\$2,180,322	\$2,180,322				
Treasury Notes (B)	\$2,989,445	\$2,991,145	\$2,982,110	\$0	\$0	\$0	\$0	\$0	\$0				
Agency Securities (B)	\$17,447,865	\$7,998,773	\$7,852,385	\$13,125,986	\$13,077,010	\$14,393,384	\$14,422,124	\$5,248,606	\$5,208,572				
Mortgaged Backed Securities (B)	\$0	\$2,540,231	\$2,549,023	\$4,486,291	\$4,479,283	\$4,304,632	\$4,302,350	\$3,088,600	\$3,089,186				
Municipal Bonds (E)	\$969,962	\$988,232	\$970,183	\$2,804,526	\$2,787,533	\$8,481,506	\$8,504,030	\$2,249,047	\$2,220,766				
Corporate Bonds (D)	\$4,885,690	\$9,318,794	\$9,243,493	\$10,033,075	\$9,947,091	\$6,060,888	\$6,043,933	\$4,505,827	\$4,484,060				
Total	\$113,035,712	\$103,703,624	\$103,463,643	\$102,774,870	\$102,615,909	\$86,721,765	\$86,753,792	\$62,997,373	\$62,907,877				
Endowment Funds													
Cash/Sweeps	\$2,592,560	\$2,595,973	\$2,595,973	\$2,599,323	\$2,599,323	\$2,360,018	\$2,360,018	\$2,938,515	\$2,938,515				
Equity Securities (C)	\$12,046	\$7,650	\$11,277	\$7,650	\$13,116	\$7,650	\$12,150	\$7,650	\$11,442				
Mutual Funds	\$56,394,208	\$53,056,172	\$55,530,957	\$53,256,516	\$55,972,851	\$52,681,875	\$56,158,121	\$53,011,507	\$55,738,854				
Total	\$58,998,814	\$55,659,795	\$58,138,207	\$55,863,489	\$58,585,290	\$55,049,543	\$58,530,289	\$55,957,672	\$58,688,811				
Other Funds													
Total	\$0	\$0	\$0	\$0	\$0	\$0	\$0	\$0	\$0				
Grand Total	\$172,034,526	\$159,363,419	\$161,601,850	\$158,638,359	\$161,201,199	\$141,771,308	\$145,284,081	\$118,955,045	\$121,596,688				
LSU HCSD													
Current Funds													
Cash/Sweeps	\$97,080,549	\$95,277,300	\$95,277,300	\$99,419,575	\$99,419,575	\$94,198,420	\$94,198,420	\$44,347,665	\$44,347,665				
Total	\$97,080,549	\$95,277,300	\$95,277,300	\$99,419,575	\$99,419,575	\$94,198,420	\$94,198,420	\$44,347,665	\$44,347,665				
Endowment Funds													
Total	\$0	\$0	\$0	\$0	\$0	\$0	\$0	\$0	\$0				
Other Funds													
Cash/Sweeps	\$7,197,883	\$7,389,927	\$7,389,927	\$7,520,924	\$7,520,924	\$7,138,760	\$7,138,760	\$7,262,974	\$7,262,974				
Money Market Accounts/Repos (A)	\$8,391,933	\$8,402,098	\$8,402,098	\$8,410,573	\$8,410,573	\$8,418,632	\$8,418,632	\$26,706,727	\$26,706,727				
Equity Securities (C)	\$499,373	\$466,488	\$466,488	\$458,552	\$458,552	\$0	\$421,600	\$0	\$412,672				
US Gov Related Securities	\$63,308	\$56,307	\$56,307	\$51,373	\$51,373	\$46,681	\$46,681	\$40,338	\$40,338				
Total	\$16,152,497	\$15,848,332	\$16,314,820	\$15,982,870	\$16,441,422	\$15,604,073	\$16,025,673	\$34,010,039	\$34,422,711				
Grand Total	\$113,233,046	\$111,125,632	\$111,592,120	\$115,402,445	\$115,860,997	\$109,802,493	\$110,224,093	\$78,357,704	\$78,770,376				
LSU - Shreveport													
Current Funds *													
Cash/Sweeps	\$1,404,024	\$2,940,574	\$2,940,574	\$1,715,217	\$1,715,217	\$1,860,720	\$1,860,720	\$1,004,168	\$1,004,168				
Money Market Accounts/Repos (A)	\$10,051	\$10,060	\$10,060	\$10,069	\$10,069	\$3,001,440	\$3,001,440	\$2,000,573	\$2,000,573				
Certificates of Deposit	\$100,000	\$100,000	\$100,000	\$100,000	\$100,000	\$100,000	\$100,000	\$100,200	\$100,200				
Total	\$1,514,075	\$3,050,634	\$3,050,634	\$1,825,286	\$1,825,286	\$4,962,160	\$4,962,160	\$3,104,941	\$3,104,941				
Endowment Funds													
Cash/Sweeps	\$50,829	\$51,333	\$51,333	\$51,333	\$51,333	\$51,333	\$51,333	\$51,666	\$51,666				
Total	\$50,829	\$51,333	\$51,333	\$51,333	\$51,333	\$51,333	\$51,333	\$51,666	\$51,666				
Other Funds													
Cash/Sweeps	\$275,112	\$277,837	\$277,837	\$277,837	\$277,837	\$335,482	\$335,482	\$58,722	\$58,722				
Total	\$275,112	\$277,837	\$277,837	\$277,837	\$277,837	\$335,482	\$335,482	\$58,722	\$58,722				
Grand Total	\$1,840,016	\$3,379,804	\$3,379,804	\$2,154,456	\$2,154,456	\$5,348,975	\$5,348,975	\$3,215,329	\$3,215,329				
System Total	\$947,385,910	\$941,708,054	\$944,793,715	\$937,300,756	\$944,035,658	\$914,488,998	\$926,821,516	\$846,121,474	\$849,536,629				

* LSUS has deposited \$1,245,281 with LSU Baton Rouge Campus for investment purposes

BENCHMARK NOTES (Example Only)

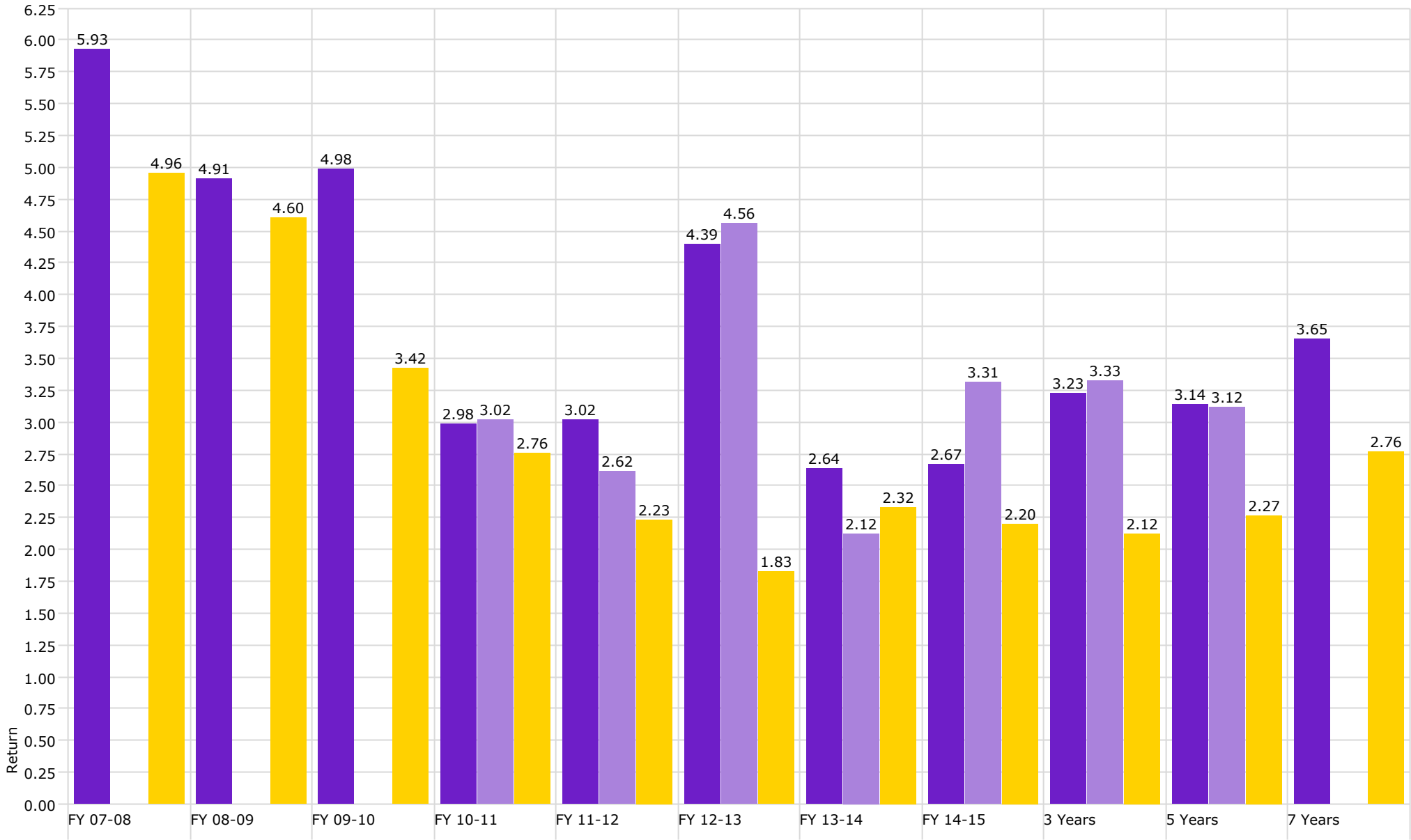
- (A) Benchmarked against 90 day T-Bill
- (B) Benchmarked against Barclay's US Agg Bond TR USC
- (C) US equities benchmarked against Russell 3000 and international against MSCI emerging market
- (D) Benchmarked against XYZ
- (E) Benchmarked against XYZ

Disclaimer: Pursuant to PM-9, corporate bonds/notes only available for investment beginning 7-1-2011. Louisiana law provides for restrictions on maturity and allocation and may effect benchmark comparisons.



Investment Management Program Endowed Accounts **Realized Yield**

As of 6/30/2015



■ Endowment

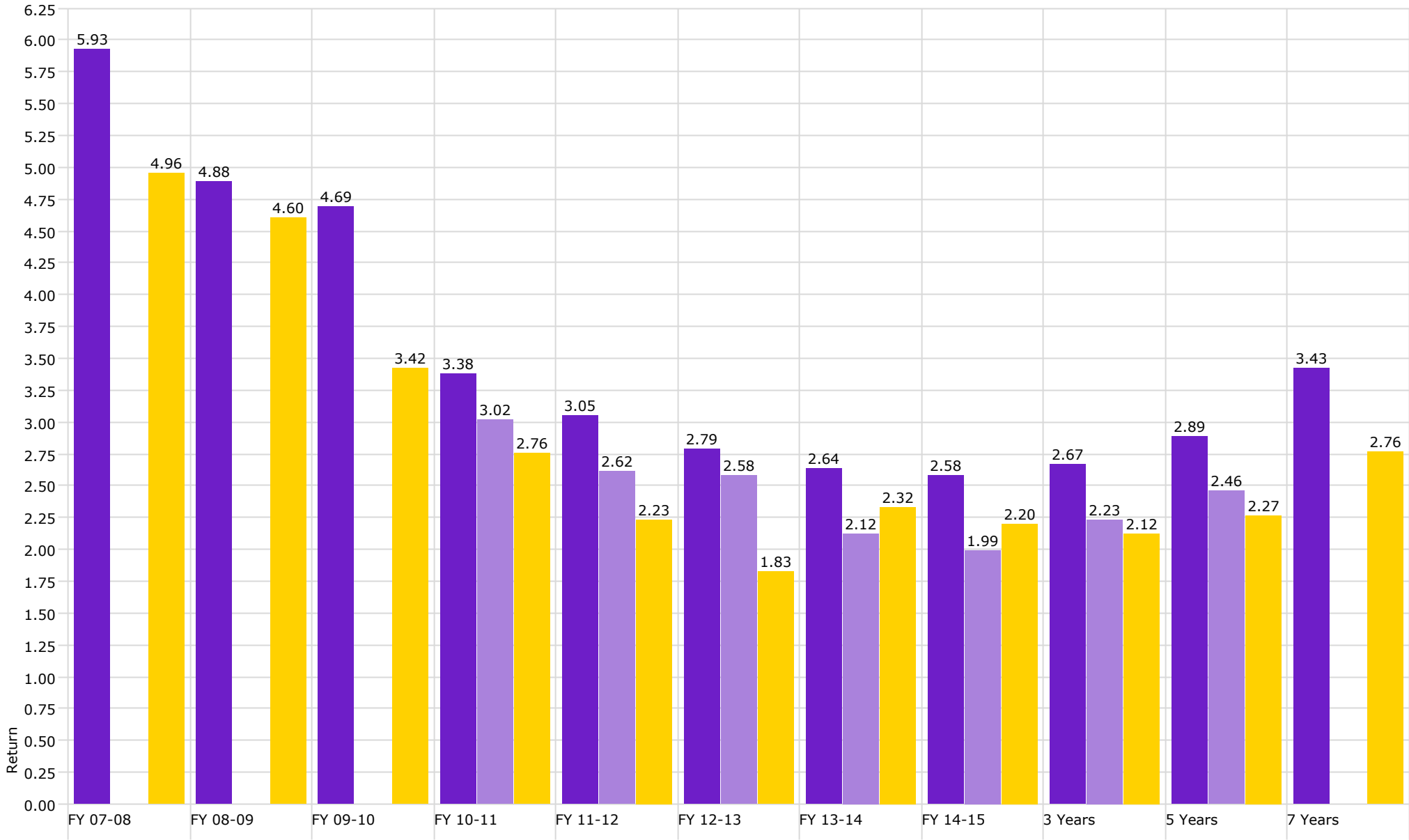
■ Osher

■ Barclays Aggregate Bond Index



Investment Management Program Endowed Accounts Coupon/Dividend Yield

As of 6/30/2015



■ Endowment

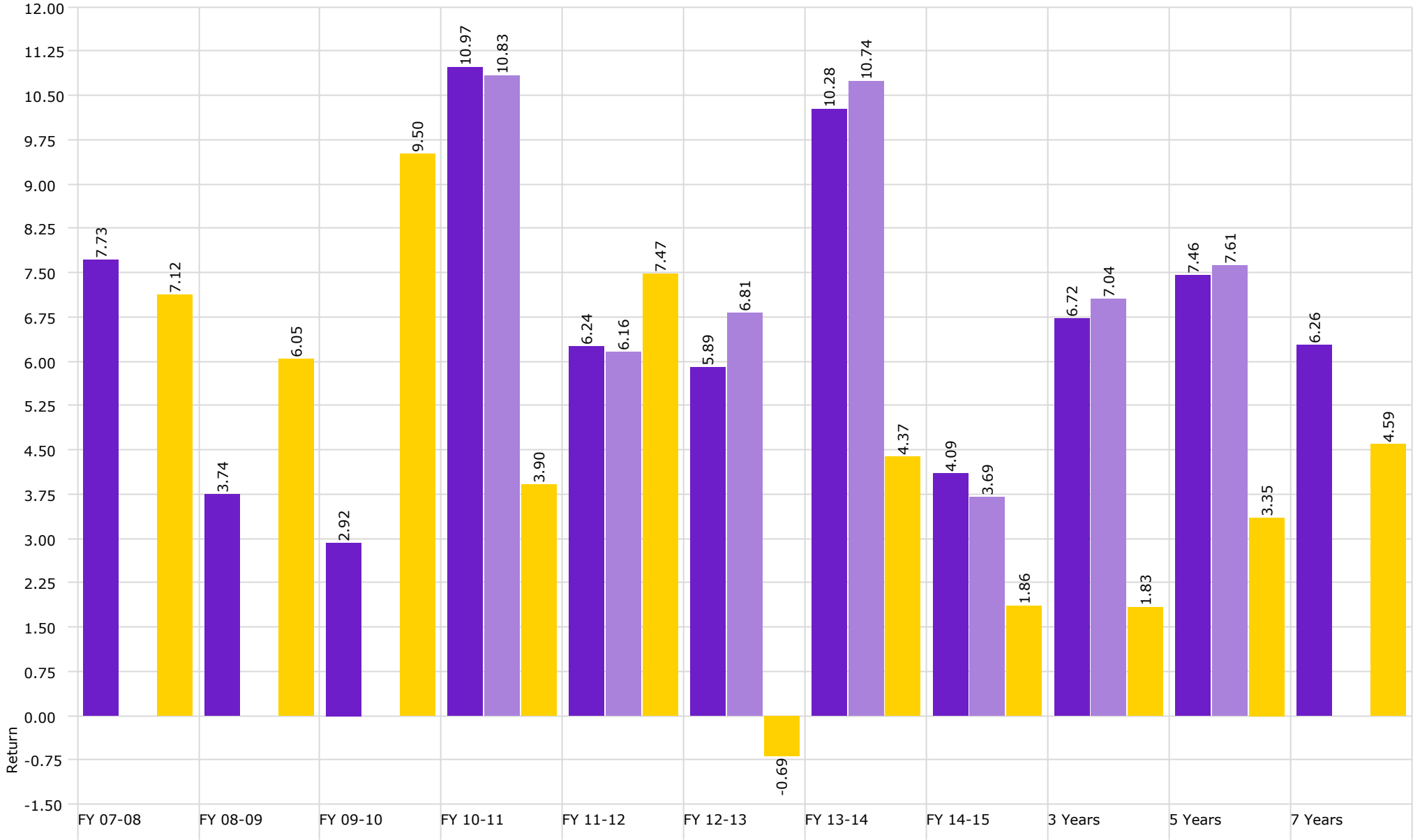
■ Osher

■ Barclays Aggregate Bond Index



Investment Management Program Endowed Accounts **Total Return**

As of 6/30/2015



■ Endowment

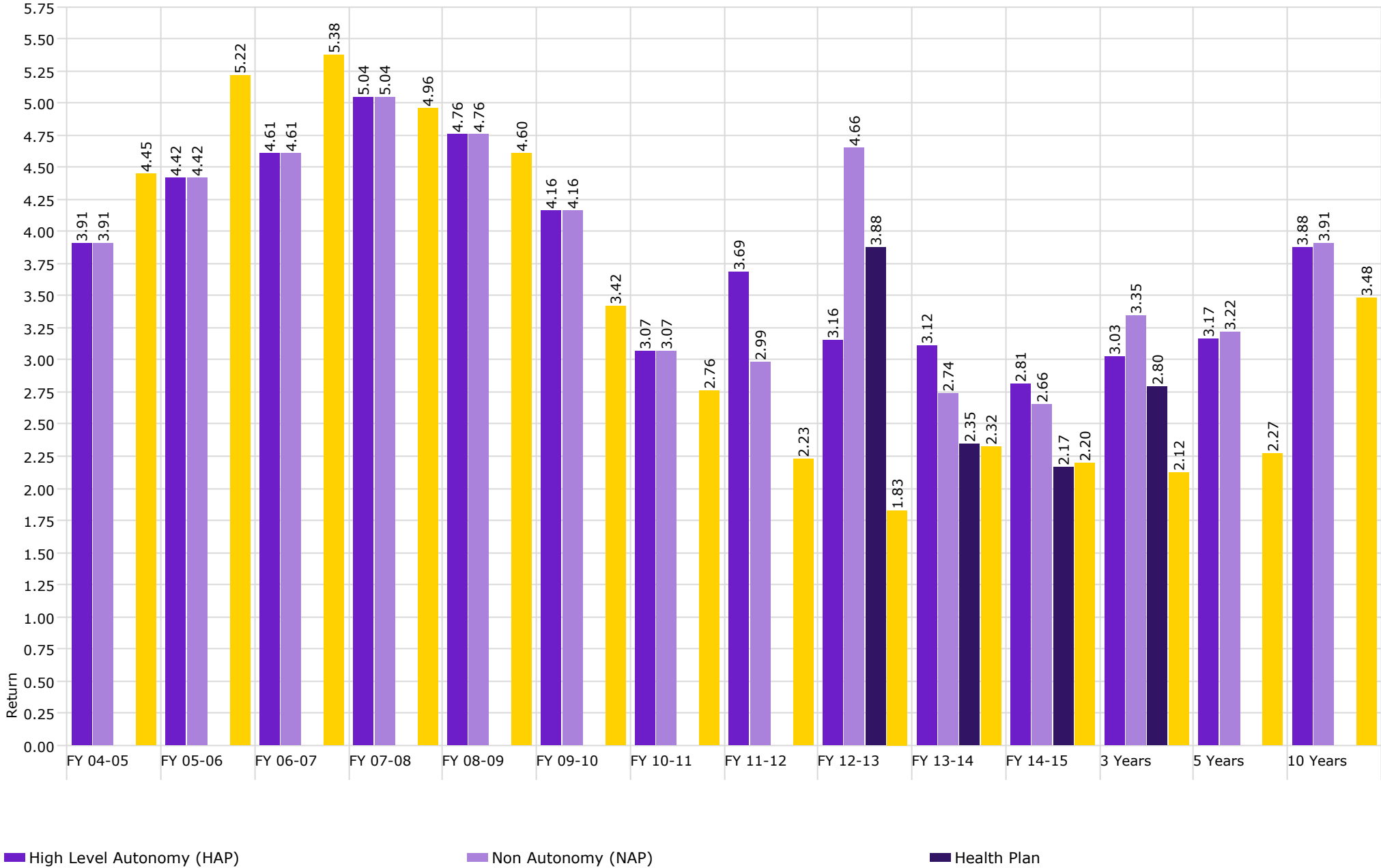
■ Osher

■ Barclays Aggregate Bond Index



Investment Management Program Non Endowed Accounts **Realized Yield**

As of 6/30/2015



High Level Autonomy (HAP)

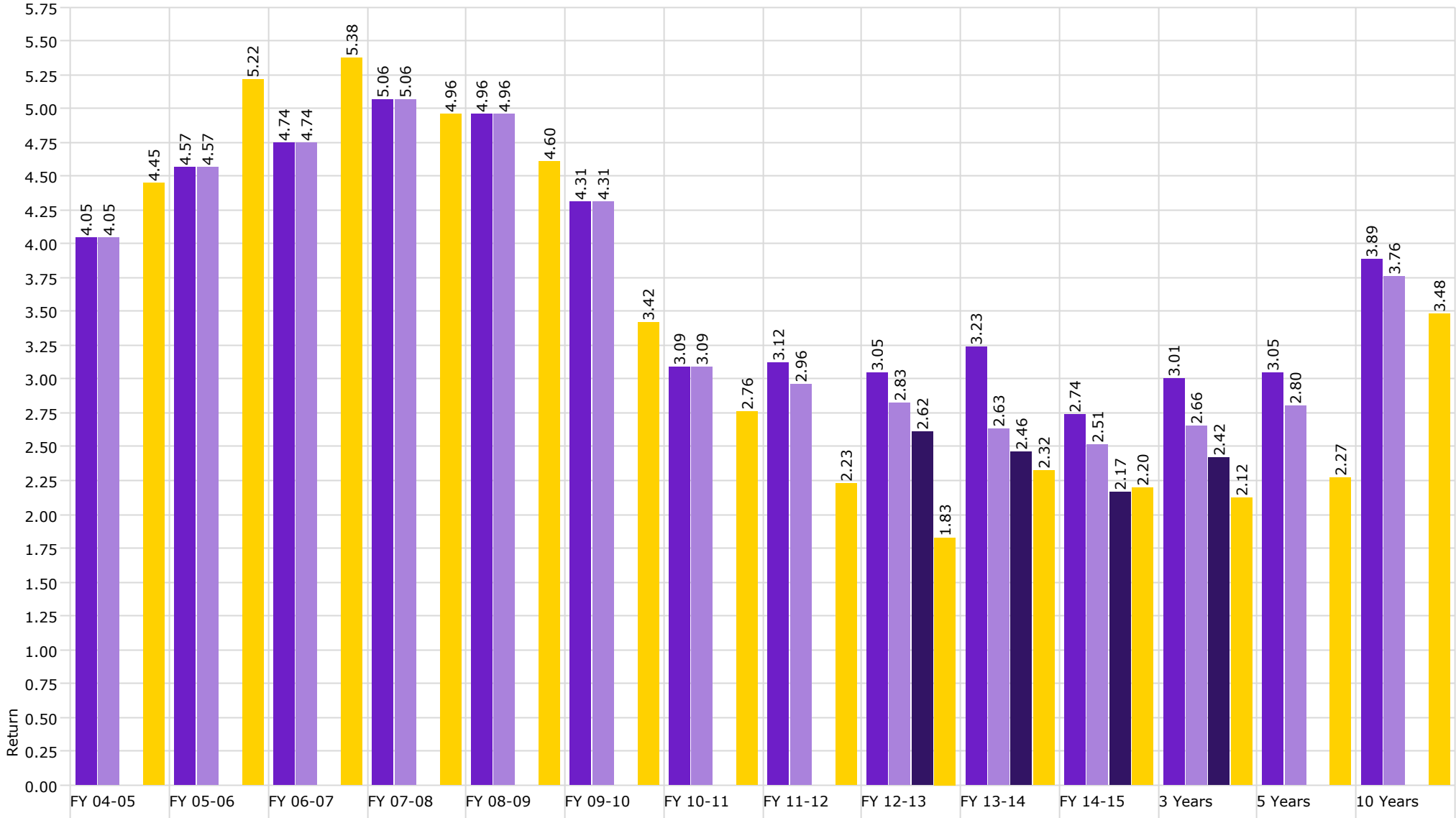
Non Autonomy (NAP)

Health Plan



Investment Management Program Non Endowed Accounts Coupon/Dividend Yield

As of 6/30/2015



High Level Autonomy (HAP)

Non Autonomy (NAP)

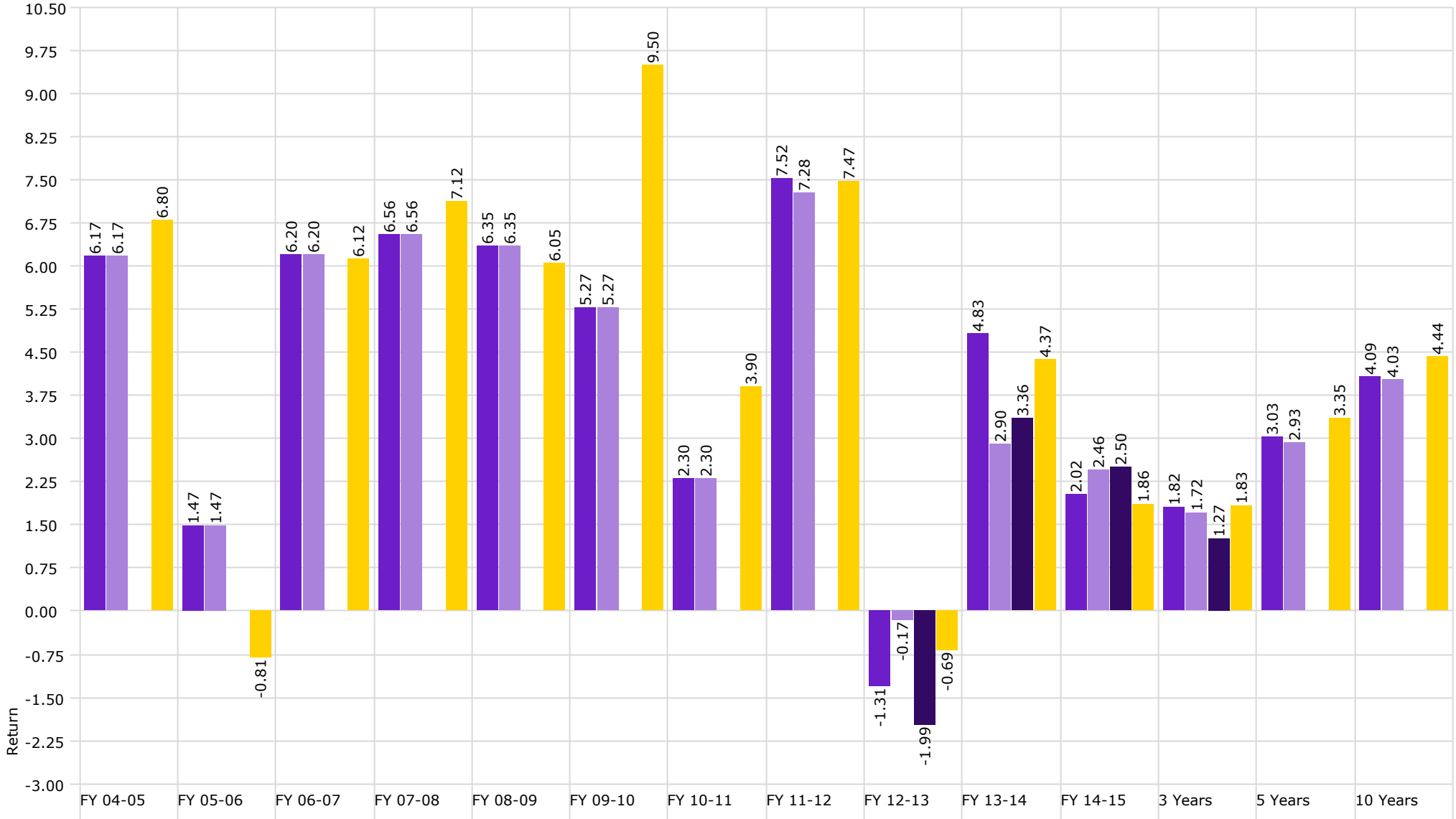
Health Plan

Barclays Aggregate Bond Index



Investment Management Program Non Endowed Accounts **Total Return**

As of 6/30/2015



High Level Autonomy (HAP)
Barclays Aggregate Bond Index

Non Autonomy (NAP)

Health Plan